

MIAMI BEACH NORTH SHORE CAFE

PROGRAM

Infill Project, Cafe, Restrooms, Outdoor Plaza/Seating

LOCATION

North Shore Park
501 72nd Street, Miami Beach, FL 33141

SIZE

3505 SF

BUDGET

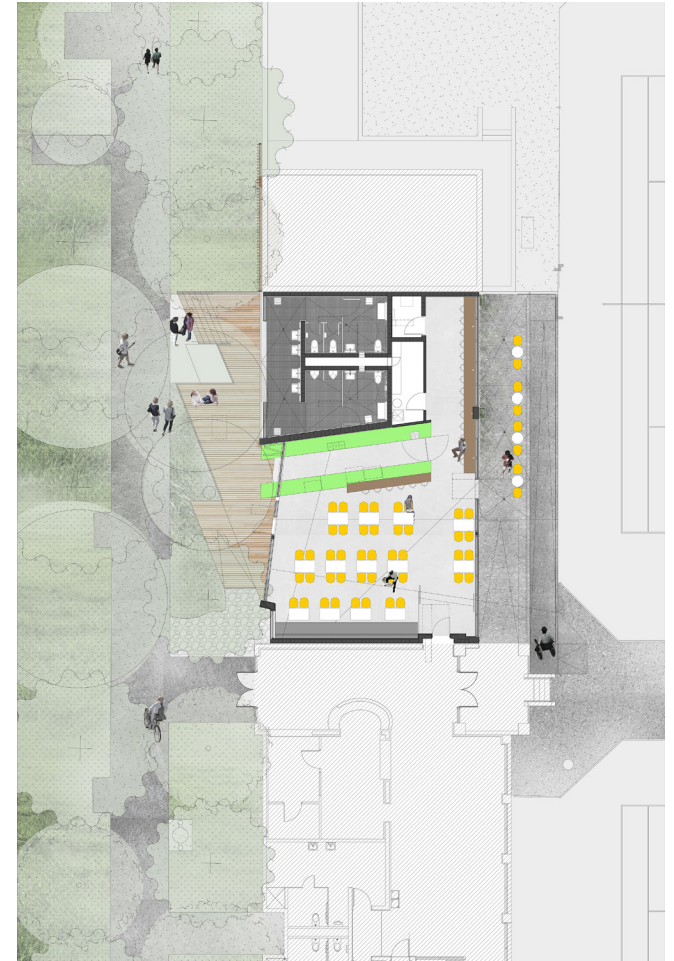
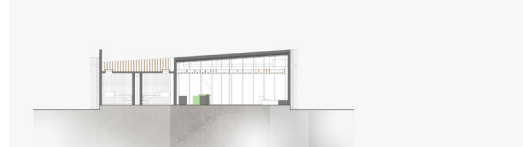
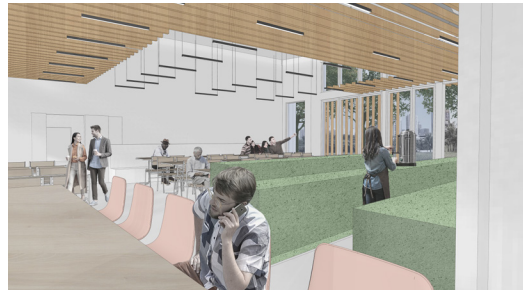
660,000

COMPLETED

Pending Construction

PROJECT TEAM

City of Miami Beach | Client
GLAVOVIC STUDIO | Architect
Architectural Alliance | Landscape Architect
CES4 | Civil and Structural Engineer
Delta G | MEPF Engineer
The Spinnaker Group | LEED Consultant
Lighting Dynamics | Lighting Consultant



"Its roofline reflects the existing site into which it fits, with a sloping roof from high to low matching that of its neighbors. The materiality of the project, with simple shapes and plenty of glass, allows the building to recede into its surroundings quite intentionally, enhancing the ephemeral qualities of light, shade and shadow while still providing practical access for tennis player and spectators. [...] The park pavilion also has several sustainability features, including a system to capture rainwater from the roof and store it in a cistern below the concession deck. The structure is also in compliance with the Florida Basic Building Code's Green Building Certification, and will be a USGBC, LEED Version 4 project."

"On the Boards" - Florida / Caribbean ARCHITECT Magazine

