

FLOW

PROGRAM

Commissioned Public Art Installation/Space

LOCATION

Broward County Court House, Fort Lauderdale, FL

SIZE

9,000 SF

BUDGET

550,000

COMPLETED

2015 - Unbuilt

PROJECT TEAM

Broward County | Client

Margi G. Nothard | Artist

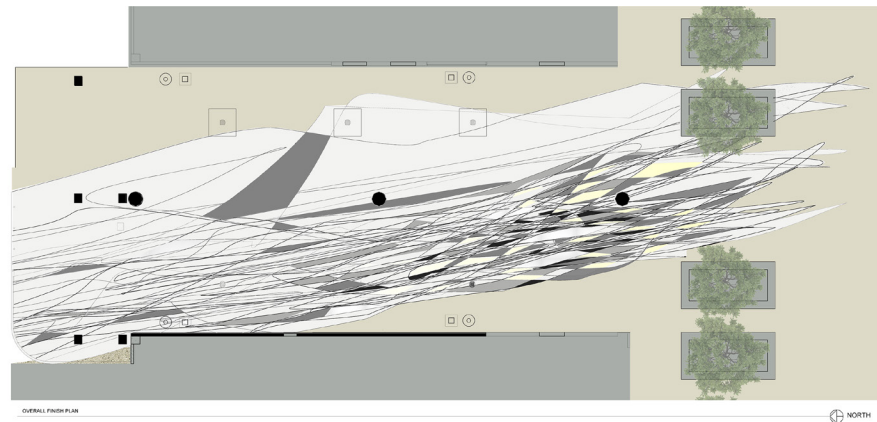
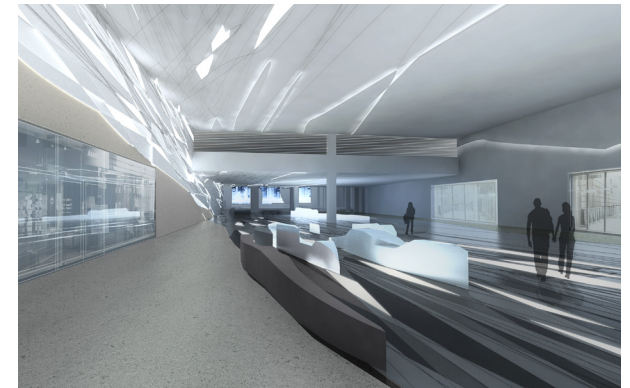
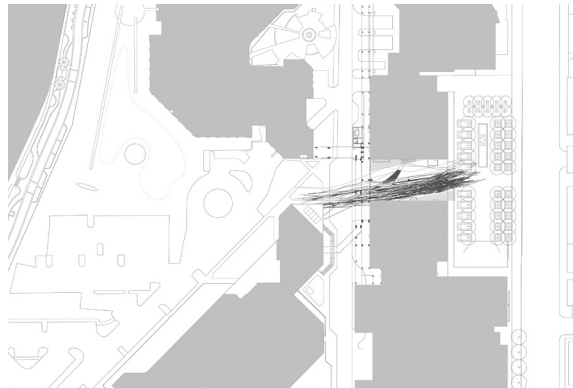
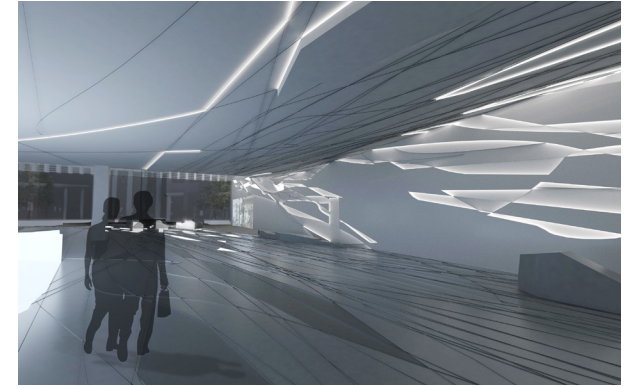
"Nothard's work promises to activate this pivotal, urban space with lighting that interacts with the movement of passersby. In addition, raised, nature-inspired forms that will double as seating, will create not just a walk-through afterthought, but an amazing space that, according to the artist, offers those who enter 'an urban hub in which everyone pauses, reconnects and re-exchanges with the environment and each other.' Broad views beyond the space make sure those who pass through are aware of the city that surrounds them as well.

Visually connecting this space and Broward's own river to the Courthouse, the City and the Community is a lofty goal for a space one might just breeze through on their way to a hearing, but if this installation, inspired by the shifts, movement and life in the New River, acts to calm or center those who pass through, even just a little ... then we say bravo to the artist and her concept.

Designing major public art, art that truly engages those who walk by it, is an endeavor, but completely worth the effort as it enriches our cities and the experiences we have within our cities. Great public art is often, in my opinion, about placemaking - creating spaces that promote people's well being. FLOW promises to be exactly that."

"FLOW: Activating a Pivotal Public Space with Art"

by John T. O'Connor in **TROPIC**



OVERALL FINISH PLAN NORTH