

ESPLANADE

JULY 1 AUGUST, 2010





Time Out House
Pond Cove, Maine

Located on the Atlantic Ocean, a rocky shoreline at the entrance to the Alewife Brook, I chose this site as it exemplified the exquisite juxtapositions of our world today. The wild blueberry, lobster-laden and warm humid summers of Maine, seem somehow too easy to conjure up the perfect house.

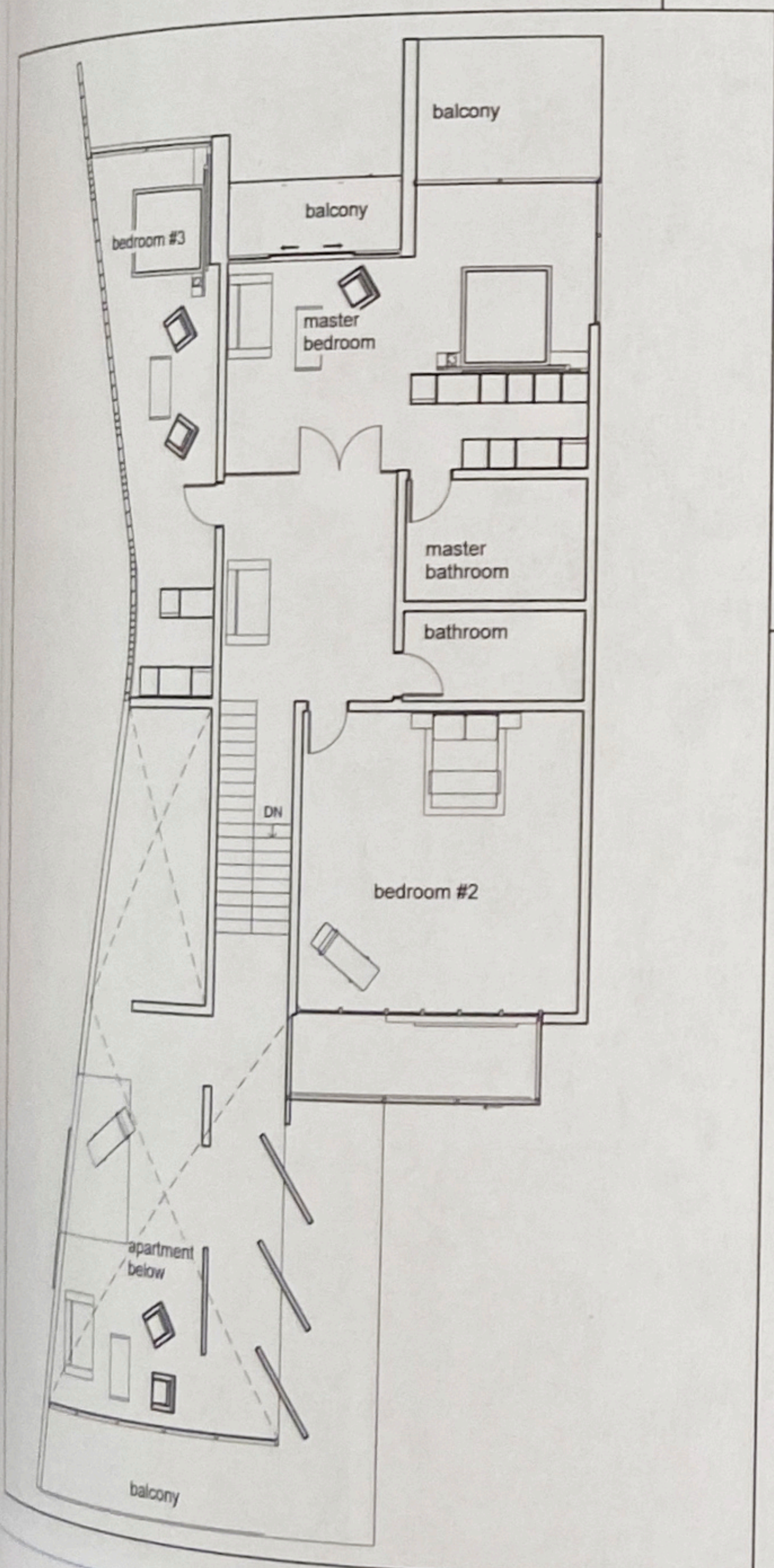
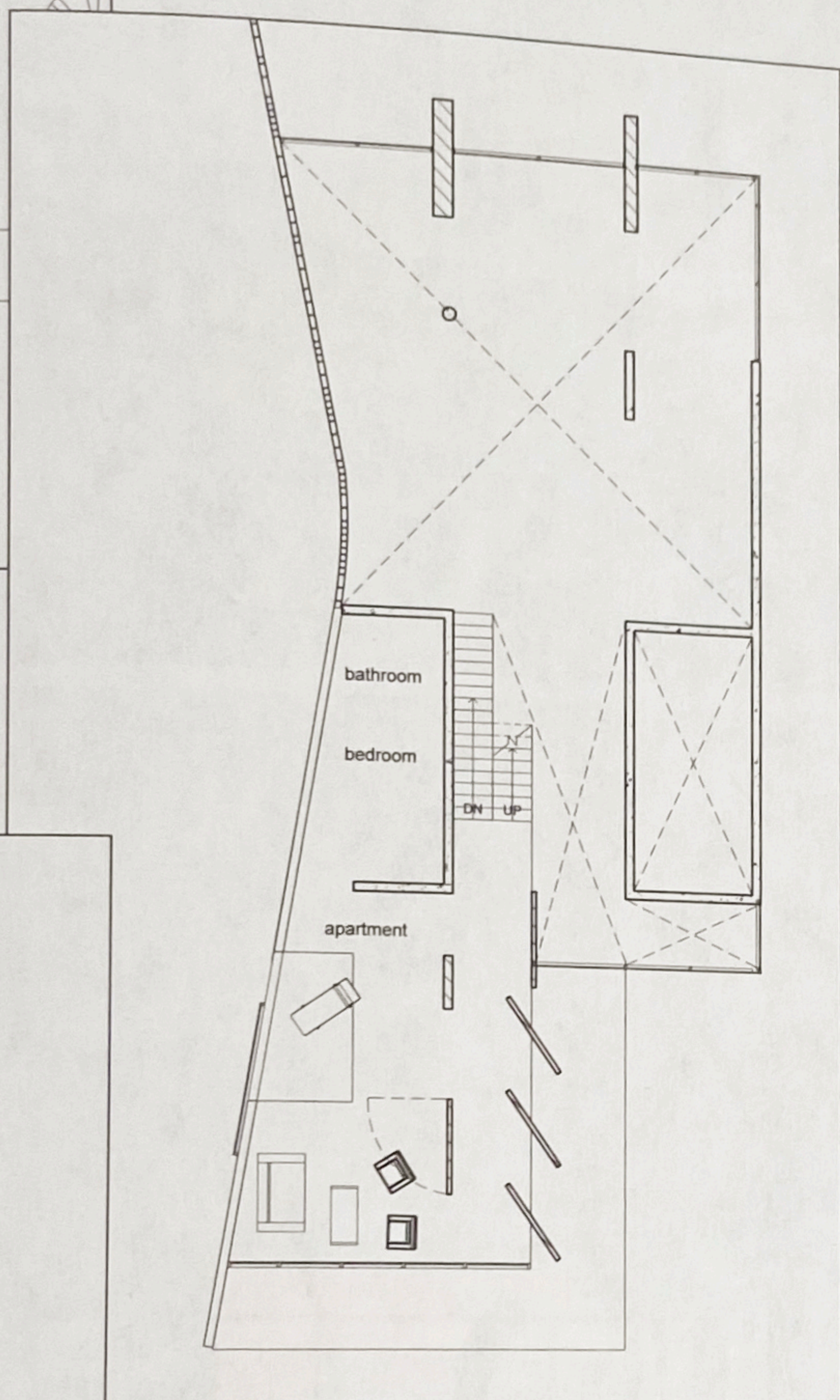
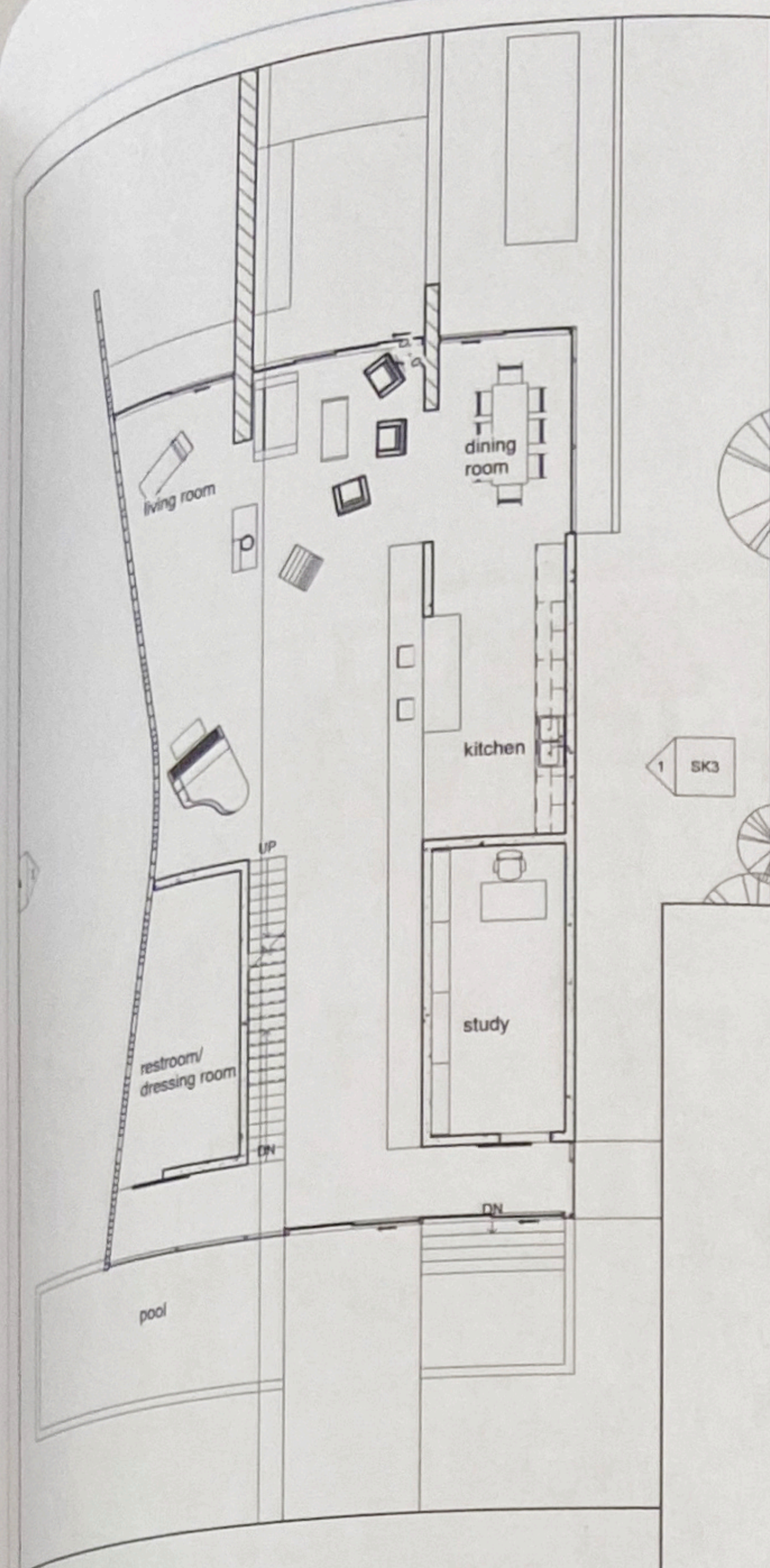
The counterpoint: Historically, the Alewife (river herring) that used to be plentiful in Maine is now seldom seen in the rivers, and the beautiful shoreline is moving closer to the homes due to global warming. A home today should provide the traditional welcoming sense of place, should be a respite, a place to make connections, a place to tell others about one's point of view and may also send a message. It should speak to who we are. So, in Maine, where the average home price is in the \$400K range and the average income is in the \$40K range, the potential for an older child or extended family member requiring assistance or staying longer at home is a possibility. The juxtaposition of a beachfront home, a place of privilege, but also a place of responsibility and possibility – to address these juxtapositions within the program of this site and house in this context provided a framework for additional concepts.

Selected concepts in site selection:

- Carefully chosen to enable the site to be manipulated to create and integrate naturalized realm to be incorporated into the house.
- The northern side of the site is carefully sculpted to increase the water access areas, including a naturalized fishery, a place for the female alewives to spend more time, should they choose, and to reenter the ocean when ready after 4-5 months.
- The bridging of the building over the site recognizes the role of the landscape and perches rather than covers the land.

Architectural highlights:

- East side creates sound chambers capturing ocean experiences and funnels them into the house, exchanging sensory experiences. Local stone is used in various ways, polished, rough and sandblasted.
- Large stones emerge from the ocean and the entire site is considered a sieve to the ocean, instead of a single line of defense as the current site is.
- South East Chamber is an outdoor eating room on the living level, a floating platform is also a table, with the sounds of the ocean washing up under the house, creating a chamber of sounds, smells as food is served. The heightening of the senses, reminds one of the uniqueness of place.
- Grey water is captured on the roof and used for irrigation and appropriate plumbing. A cistern is maintained under the house. The site carving has enabled the burying of the cistern.



ABOVE: Floor plans for the three levels of the house including ground level, top, Mezzanine level, above, and upper level, left. The mezzanine level contains a loft-like, two-story apartment space, cantilevered over the home's entryway.

OPPOSITE: Drawings of the house on its site, both from the water and from the entry walkway.

Glavovic Studio | Margi Nothard
Studio Collaborators: Camilo Lopez, Pascal Campi
Fort Lauderdale, Florida
GlavovicStudio.com