

Urban Stair fort lauderdale

Glavovic Studio, Fort Lauderdale, Florida

Urban sculptural element • urban-stair concept rooted in city's history • celebrates museum's artistic values • creates entrance stair to museum's second level terrace • steel and glass construction celebrate movement, landscape and form • "This exterior stair was extended to become an urban device. Its detailing and attention to the ideas of passage and threshold are interesting." Jury

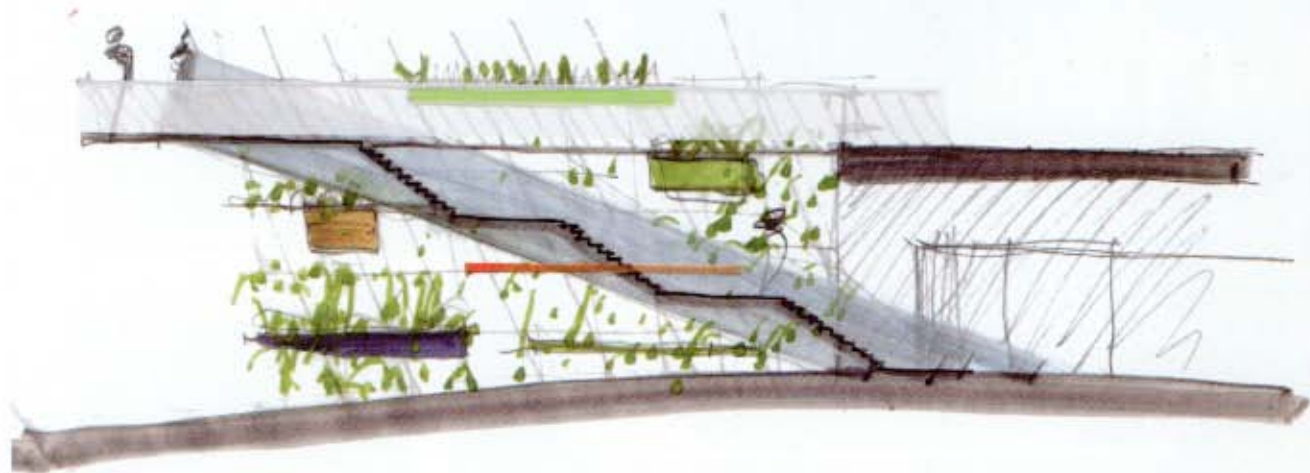


The concept of the stair as a bridge explores the layers embedded in the site and the experience of the individual. The sculptural expression of the south plaza, the reinforcement of the existing nexus of the breezeway museum entrance and the lyrical animations of the shadows and people occupying the stair, animate the existing building.

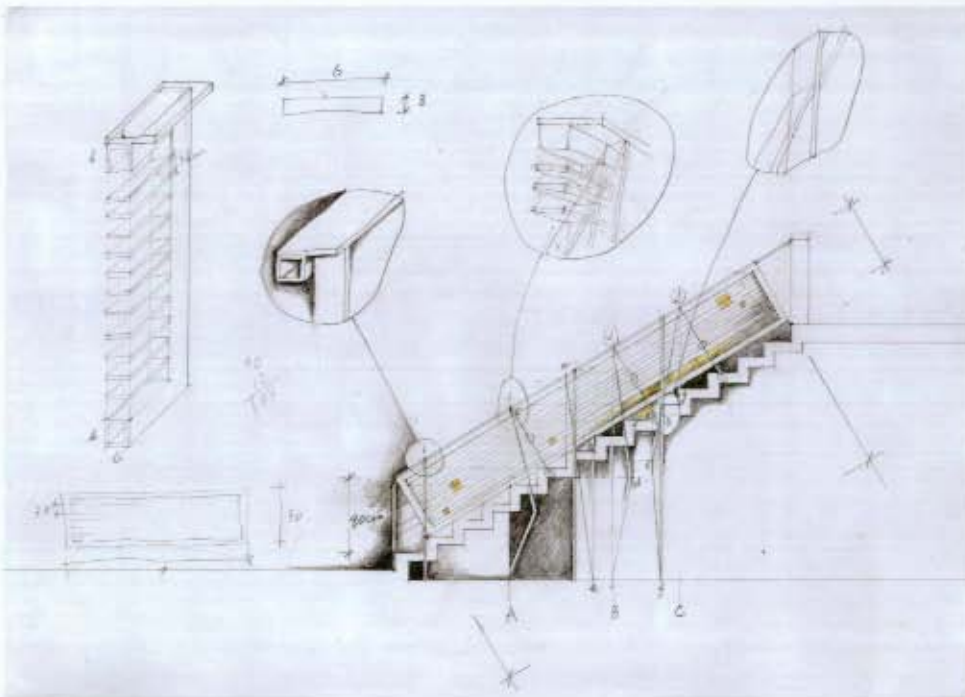
Glavovic Studio



Photos by Terence O'Connor



florida / caribbean ARCHITECT



Design Awards Issue
2006

Official Journal of the Florida Association of the American Institute of Architects

